

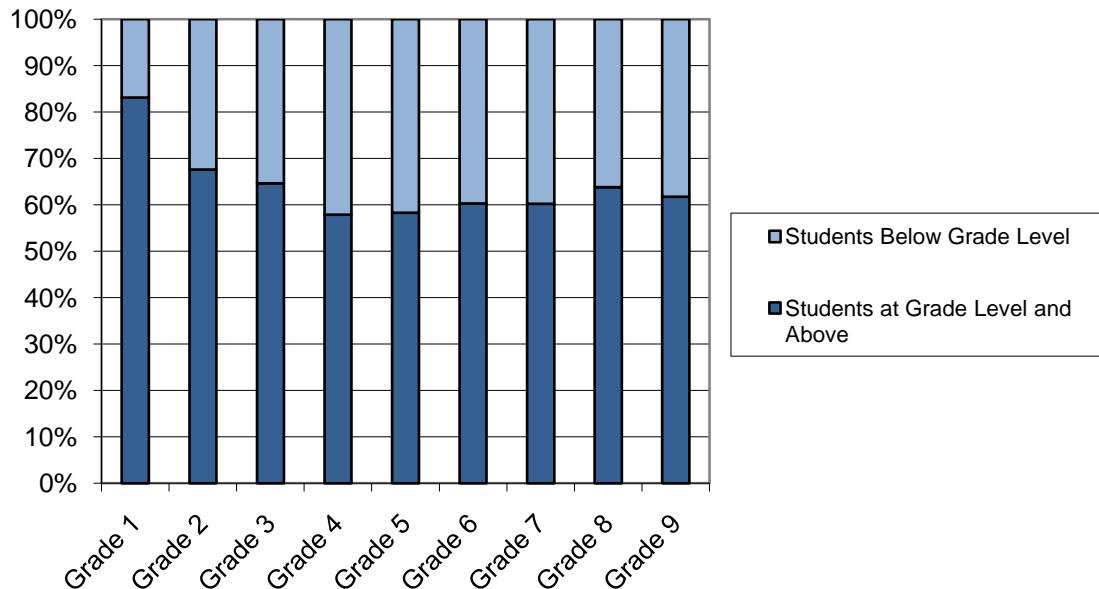
Functional Grade Levels, Alberta Achievement Test Results and Attendance – 2008/09 School year

Functional Grade Level

Functional Grade Level is the level of curriculum that a student was working on for the majority of the school year. For 2008/09, in English Language Arts, 83%, or slightly more than four out of five students enrolled in grade one were able to work on grade one curriculum for the majority of their first year in school. For Mathematics, 90%, or nine of ten students were able to work on grade one curriculum. This is an improvement from the 2007/08 year, when teachers reported 79% of grade one students were able to work on grade one curriculum in English Language Arts and 85% in Mathematics.

English Language Arts Functional Grade Level Results

**NWT - Functional Grade Level - English Language Arts
2008/09**



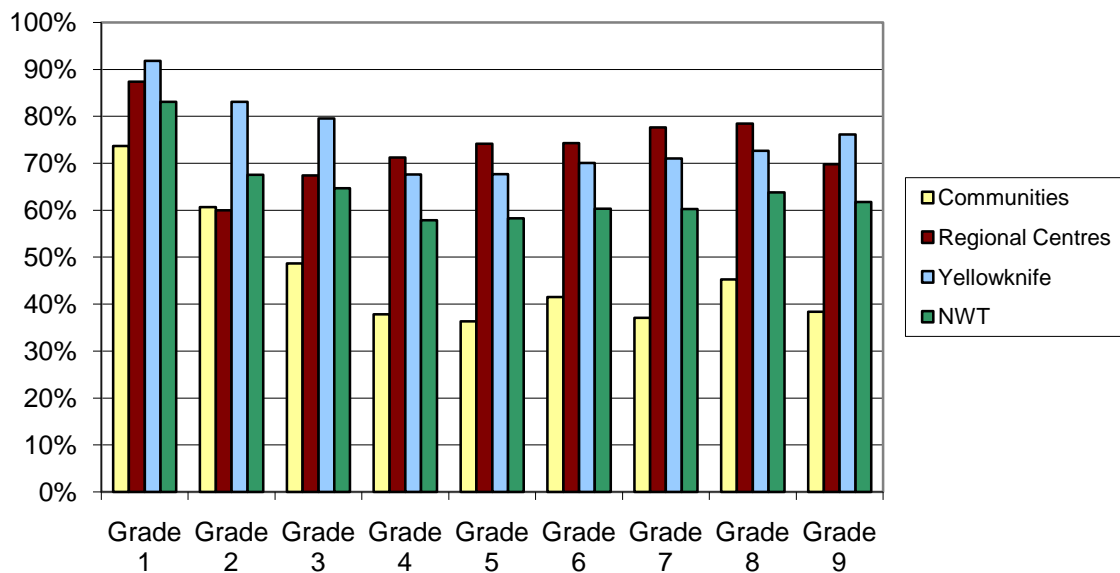
English Language Arts 2008/09

	Grade 1	Grade 2	Grade 3	Grade 4	Grade 5	Grade 6	Grade 7	Grade 8	Grade 9
Students at Grade Level and Above	83%	68%	65%	58%	58%	60%	60%	64%	62%
Students Below Grade Level	17%	32%	35%	42%	42%	40%	40%	36%	38%

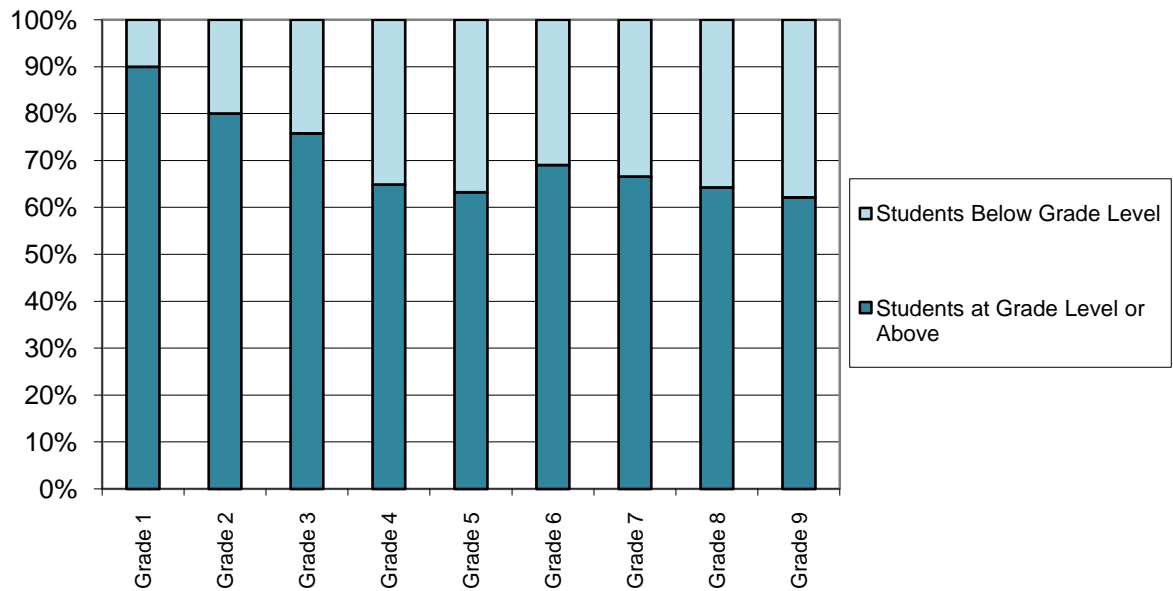
English Language Arts 2008/09 – Students At and Above Grade Level

	Grade 1	Grade 2	Grade 3	Grade 4	Grade 5	Grade 6	Grade 7	Grade 8	Grade 9
Communities	74%	61%	49%	38%	36%	41%	37%	45%	38%
Regional Centres	87%	60%	67%	71%	74%	74%	78%	78%	70%
Yellowknife	92%	83%	80%	68%	68%	70%	71%	73%	76%
NWT	83%	68%	65%	58%	58%	60%	60%	64%	62%

Students At or Above Grade Level - English Language Arts 2008/09



NWT - Functional Grade Level - Mathematics 2008/09



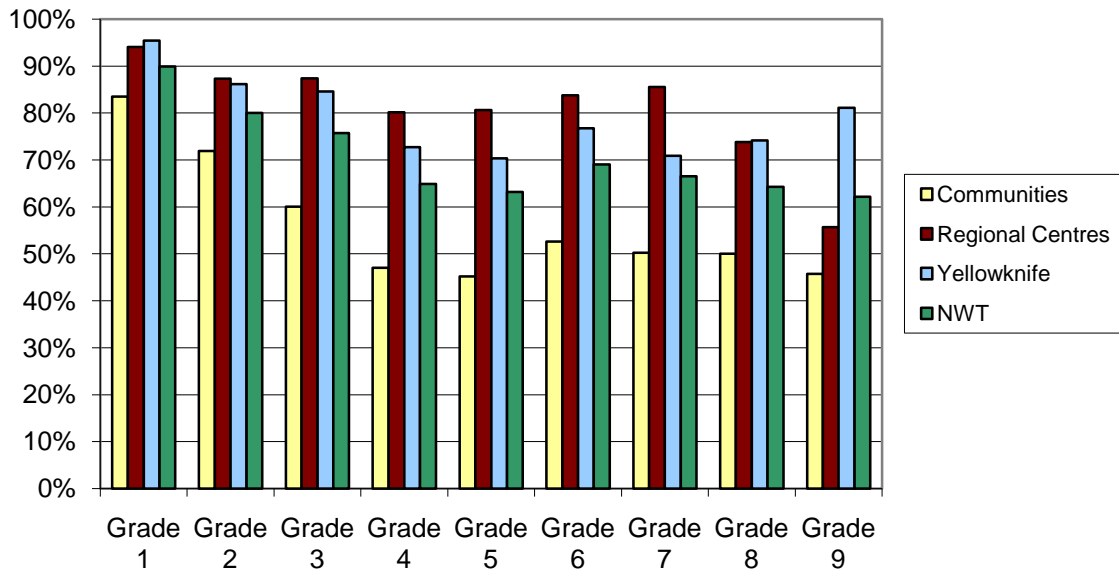
Mathematics 2008/09

	Grade 1	Grade 2	Grade 3	Grade 4	Grade 5	Grade 6	Grade 7	Grade 8	Grade 9
Students at Grade Level or Above	90%	80%	76%	65%	63%	69%	67%	64%	62%
Students Below Grade Level	10%	20%	24%	35%	37%	31%	33%	36%	38%

Mathematics 2008/09

	Grade 1	Grade 2	Grade 3	Grade 4	Grade 5	Grade 6	Grade 7	Grade 8	Grade 9
Communities	83%	72%	60%	47%	45%	53%	50%	50%	46%
Regional Centres	94%	87%	87%	80%	81%	84%	86%	74%	56%
Yellowknife	95%	86%	85%	73%	70%	77%	71%	74%	81%
NWT	90%	80%	76%	65%	63%	69%	67%	64%	62%

Students At or Above Grade Level - Mathematics 2008/09



Cohort Results

Functional Grade Levels

Functional Grade Levels were implemented over a three year period starting with grades one through three, in 2004/05, and expanding to grade 9 for the first time in 2006/07. This is the second year that cohort data can be presented for the grade six and nine population.

English Language Arts

% of students enrolled in grade 6, in 2009, functioning at or above grade level 60%
 % of students enrolled in grade 3, in 2006, functioning at or above grade level 58%

% of students enrolled in grade 9 in 2009, functioning at or above grade level 62%
 % of students enrolled in grade 6, in 2006, functioning at or above grade level 60%

Mathematics

% of students enrolled in grade 6, in 2009, functioning at or above grade level 69%
 % of students enrolled in grade 3, in 2006, functioning at or above grade level 71%

% of students enrolled in grade 9, in 2009, functioning at or above grade level 62%
 % of students enrolled in grade 6, in 2006, functioning at or above grade level 67%

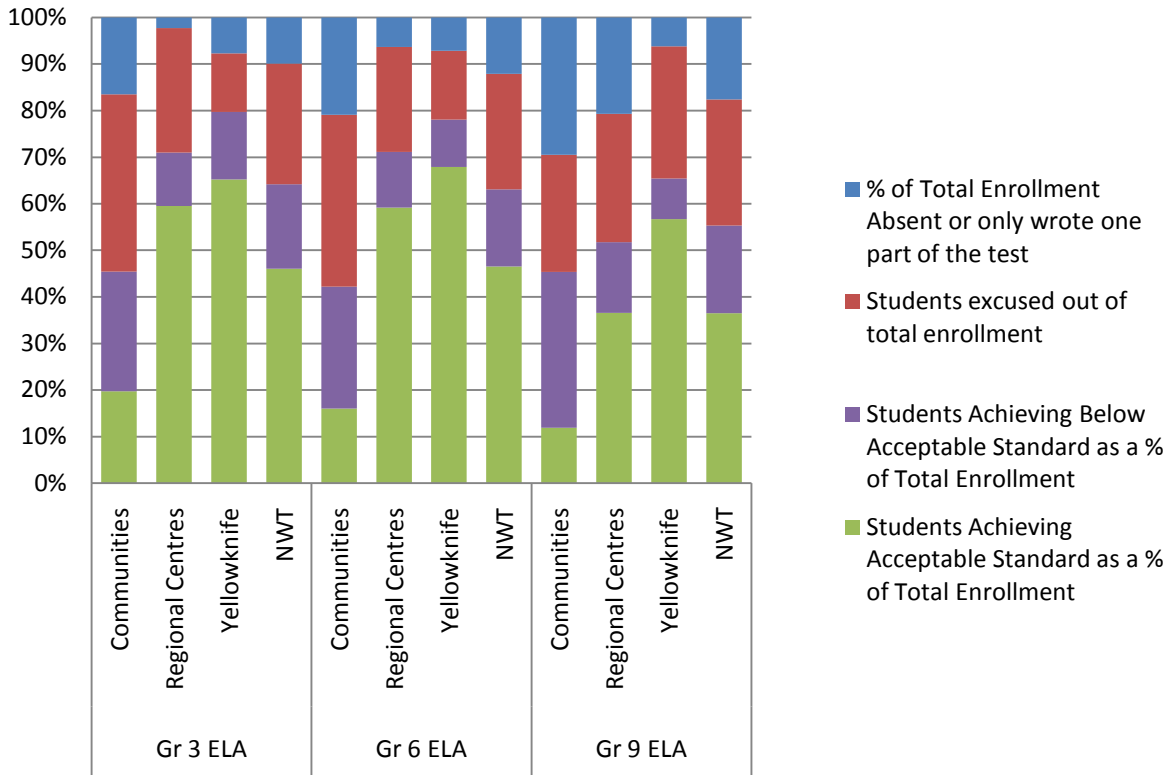
The proportion of the student population enrolled in grade six functioning at and above grade six level has increased by 2% in English Language and declined by 2% in Mathematics from the time that cohort was in grade three.

The proportion of the student population enrolled in grade nine functioning at and above grade nine level has increased by 2% in English Language and declined by 5% in Mathematics from the time that cohort was in grade six.

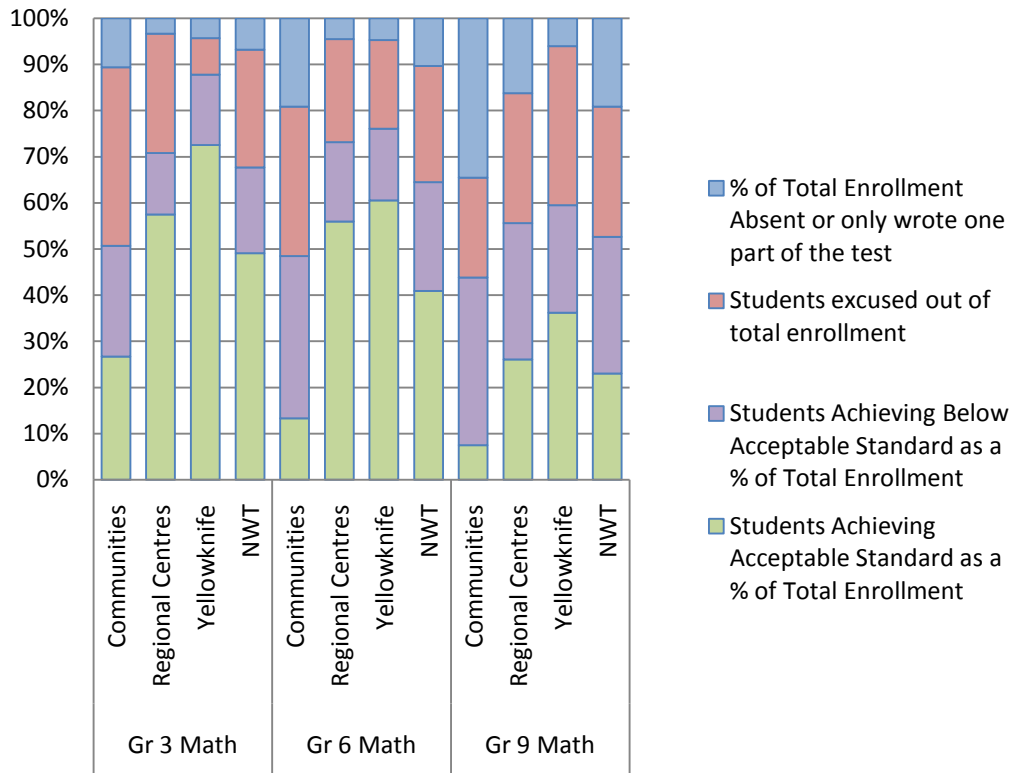
Alberta Achievement Test Results

Commencing in 2007 with changes to the NWT AAT Exclusion Policy, Superintendents were given the authority to excuse students from Alberta Achievement Testing if the students were on a documented Individual Education Plan (IEP) or if they were working on curriculum two or more grade levels below their grade of enrolment and had a documented Modified Education Plan (MEP). Should a student fulfill the above criteria and participate in the testing, for NWT reporting purposes, their results have been removed from the NWT results and the students have been considered excused from writing the tests. The numbers of students excused from the testing are still included in calculation of Students Achieving Acceptable Standard as a percentage of the total enrolment.

2009 NWT AAT Results for ELA



2009 NWT AAT Results for Mathematics



- Available Test Results: results for students writing all parts of the test
- Reportable Results: results for students with Individual Education Plans and with Functional Grade Levels two or more grade levels below the grade of enrolment are not included.
- French Language Arts Results have been NWT generated
- NWT enrolments for the tests include students excused from testing.
- Students achieving the Standard of Excellence are also included in the percentage of students achieving an Acceptable standard

2009 NWT Results for Alberta Achievement Tests

Alberta Achievement Test	Community Type	% of Total enrolment where test results are available	% of Total Enrolment Absent or only wrote one part of the test	Percentage of students excused out of total enrolment	Students Achieving Acceptable Standard as a % of Available Test Results	Students Achieving Acceptable Standard as a % of Total Enrolment	Students Achieving Below Acceptable Standard as a % of Available Test Results	Students Achieving Below Acceptable Standard as a % of Total Enrolment
Grade 3 ELA	Communities	45.4%	16.5%	38.1%	43.4%	19.7%	56.6%	25.7%
	Regional Centres	71.0%	2.3%	26.7%	83.9%	59.5%	16.1%	11.5%
	Yellowknife	79.7%	7.7%	12.6%	81.8%	65.2%	18.2%	14.5%
	NWT	64.2%	9.9%	25.9%	71.7%	46.0%	28.3%	18.2%
Grade 6 ELA	Communities	42.2%	20.9%	36.9%	37.9%	16.0%	62.1%	26.2%
	Regional Centres	71.1%	6.3%	22.5%	83.2%	59.2%	16.8%	12.0%
	Yellowknife	78.1%	7.2%	14.8%	87.0%	67.9%	13.0%	10.1%
	NWT	63.1%	12.1%	24.8%	73.8%	46.5%	26.2%	16.6%
Grade 9 ELA	Communities	45.4%	29.5%	25.1%	26.2%	11.9%	73.8%	33.5%
	Regional Centres	51.7%	20.7%	27.6%	70.7%	36.6%	29.3%	15.2%
	Yellowknife	65.5%	6.2%	28.4%	86.7%	56.7%	13.3%	8.7%
	NWT	55.3%	17.6%	27.0%	65.9%	36.5%	34.1%	18.9%
Grade 3 Math	Communities	50.7%	10.6%	38.7%	52.7%	26.7%	47.3%	24.0%
	Regional Centres	70.8%	3.3%	25.8%	81.2%	57.5%	18.8%	13.3%
	Yellowknife	87.8%	4.3%	7.9%	82.6%	72.6%	17.4%	15.2%
	NWT	67.7%	6.8%	25.5%	72.6%	49.1%	27.4%	18.6%
Grade 6 Math	Communities	48.4%	19.1%	32.4%	27.5%	13.3%	72.5%	35.1%
	Regional Centres	73.1%	4.5%	22.4%	76.5%	56.0%	23.5%	17.2%
	Yellowknife	76.1%	4.7%	19.2%	79.6%	60.6%	20.4%	15.5%
	NWT	64.5%	10.3%	25.2%	63.4%	40.9%	36.6%	23.6%
Grade 9 Math	Communities	43.8%	34.5%	21.7%	17.2%	7.5%	82.8%	36.3%
	Regional Centres	55.6%	16.2%	28.2%	46.8%	26.1%	53.2%	29.6%
	Yellowknife	59.5%	6.0%	34.5%	60.9%	36.2%	39.1%	23.3%
	NWT	52.7%	19.2%	28.2%	43.7%	23.0%	56.3%	29.7%

2009 AAT Results for French Immersion

	Grade 6 French Language Arts	Grade 9 French Language Arts	Grade 3 Math (French)	Grade 6 Math (French)	Grade 9 Math (French)
Students Achieving Acceptable Standard as a % of Available & Reportable Test Results	85.2%	92.9%	82.6%	82.1%	87.2%
Students Achieving Acceptable Standard as a % of the Total Student Enrolment	69.7	92.9%	70.4%	71.9%	82.9%

Cohort Results

The changes made to the policy in 2007 resulted in different criteria being used to select students for participation in the AATs. This has an impact on the cohort reporting as the students writing the AATs in 2006 fulfilled different criteria from their cohort who wrote in 2009.

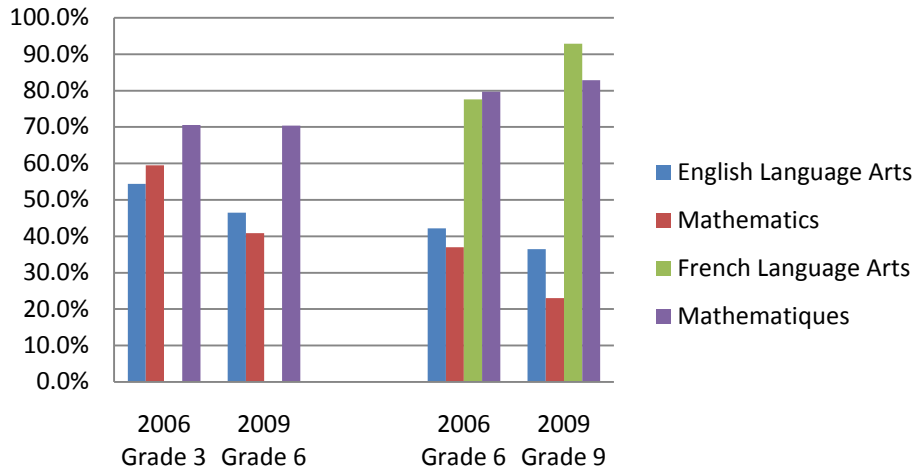
With the caveat that the cohort groups are similar, but not the same, following are the results for 2009. Grade six students' AAT results, in 2009, for English Language Arts show a 7.9% decrease in the proportion of students achieving an acceptable standard as a percentage of the total enrolment compared to their results three years previous, for grade 3. The percentage of the grade nine student population achieving an acceptable result for English Language Arts decreased by 5.7% over their results in grade six, three years previous. In Mathematics, the percentage of grade six students achieving an acceptable standard decreased by 18.6% from their results in grade three while results for students in grade nine decreased by 14.0% from their grade six results.

Students Achieving Acceptable Standard on AATs as a % of Total Enrolment

Adjusted to Accommodate NWT Exclusion Policy

	English Language Arts	Mathematics
2006 Grade 3	54.4%	59.5%
2009 Grade 6	46.5%	40.9%
2006 Grade 6	42.2%	37.0%
2009 Grade 9	36.5%	23.0%

Cohort Results on AATs - 2006 and 2009



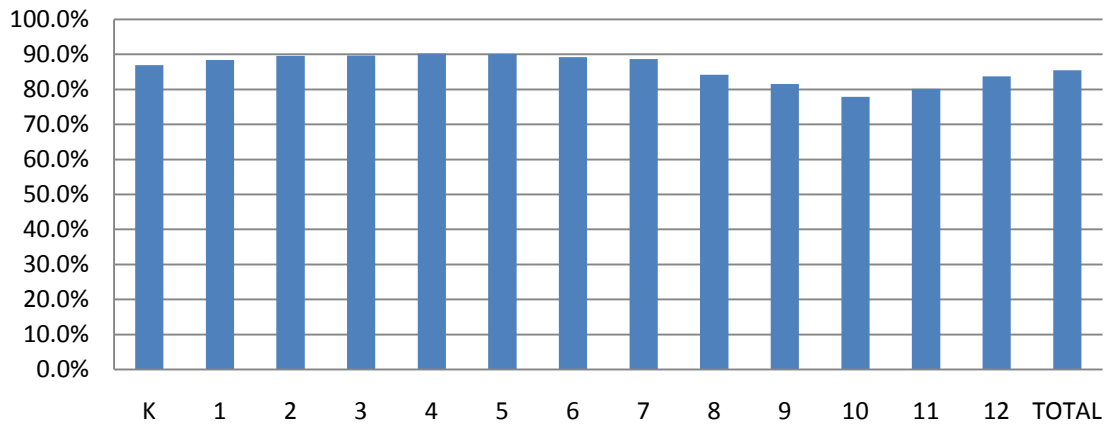
Students Achieving Acceptable Standard as a % of Total Enrolment (Adjusted to Accommodate NWT Exclusion Policy)

	French Language Arts	Mathématiques
2006 Grade 3		70.6%
2009 Grade 6		70.4%
2006 Grade 6	77.6%	79.7%
2009 Grade 9	92.9%	82.9%

There are no grade three results for French Language Arts Alberta Achievement Tests in 2006 as they were available for the first time in 2008. As such, there are no results for comparison for this year's grade 6 French Immersion students. In Mathématiques, the results of the grade 6 students declined by 0.2% from their grade 3 AAT Mathématiques results. Grade nine French Immersion students' results in French Language Arts, for 2009, increased 15.3% from their results in grade 6. In Mathématiques, the proportion of 2008 grade nine students achieving an acceptable standard increased 3.2% from their grade six results.

Attendance – 2008/09

NWT Average Attendance By Grade - 2008/09



	K	1	2	3	4	5	6	7	8	9	10	11	12	TOTAL
Communities	80.4%	82.5%	85.6%	84.4%	85.6%	84.2%	85.6%	83.8%	76.2%	77.1%	76.6%	79.5%	81.6%	81.4%
Regional Centres	89.4%	90.6%	89.8%	91.8%	91.3%	91.9%	87.9%	88.2%	82.0%	76.3%	73.3%	76.0%	78.4%	84.1%
Yellowknife	90.9%	92.1%	92.9%	93.3%	93.5%	93.3%	93.3%	93.2%	91.7%	87.3%	81.6%	83.0%	87.8%	89.5%
NWT	86.9%	88.4%	89.6%	89.7%	90.2%	90.1%	89.2%	88.6%	84.2%	81.5%	77.9%	80.2%	83.7%	85.5%

For the 2008/09 school year, the average attendance for students enrolled in the NWT was 85.5%. This is a decline from 2007/08 when the average attendance was 86.4%. Basically, a student was absent a day and a half out of every two weeks. Should this rate continue, an average student will be absent one year out of every six years of schooling.